

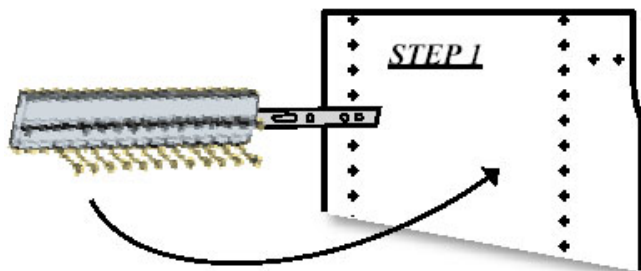
# Closet Organizers USA



## Tie / Belt Rack Installation

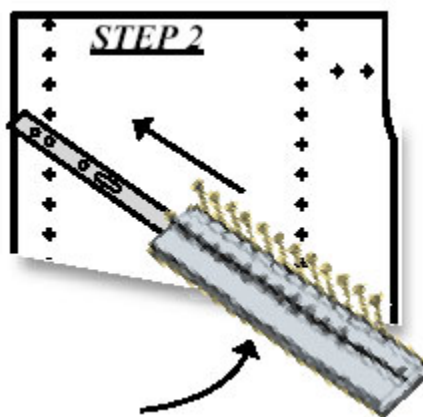
### STEP 1:

To mount a sliding tie / belt rack on a vertical panel, first hold the rack with the slide extended. Attach the rack (at the appropriate height) to one of the holes at the front, finished edge of the vertical panel with a 1/2" or Euro screw. Then swing the rack around to position shown in Step 2.



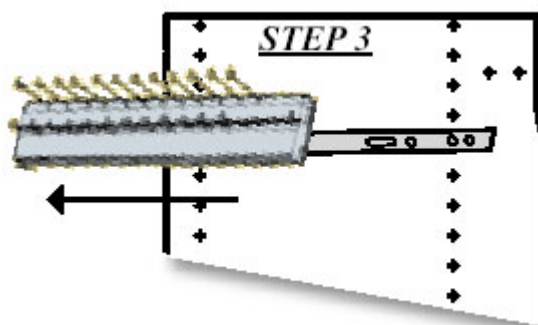
### STEP 2:

Bring the rack around to a horizontal position, pushing the rack toward the front edge of the vertical panel, exposing the opposite end of the slide, as shown in Step 3.



### STEP 3:

Attach the back of the slide with a 1/2" or Euro screw at the vertical panel hole that horizontally lines up with the hole where the front of the slide is mounted.



### NOTE:

Tie / belt racks can also be mounted to any wall or door in this manner; however, in some cases a longer screw may be necessary.



Closet Organizers USA  
1-866-418-1328

[www.ClosetOrganizersUSA.com](http://www.ClosetOrganizersUSA.com)